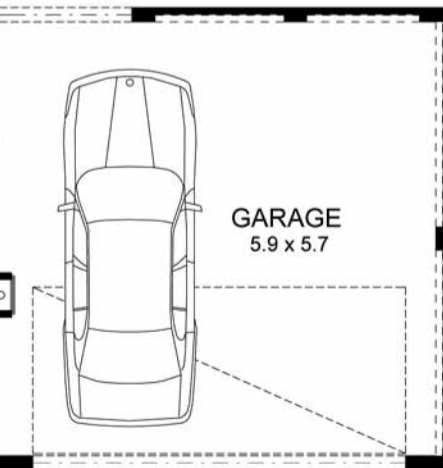
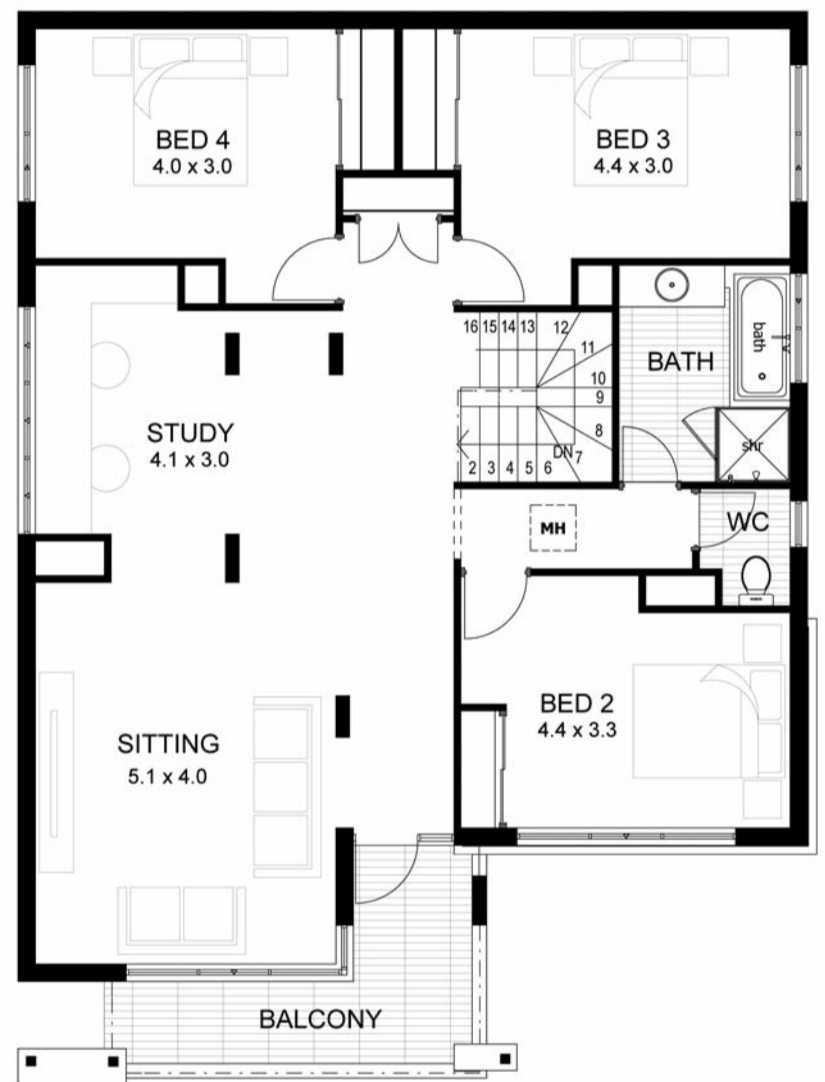
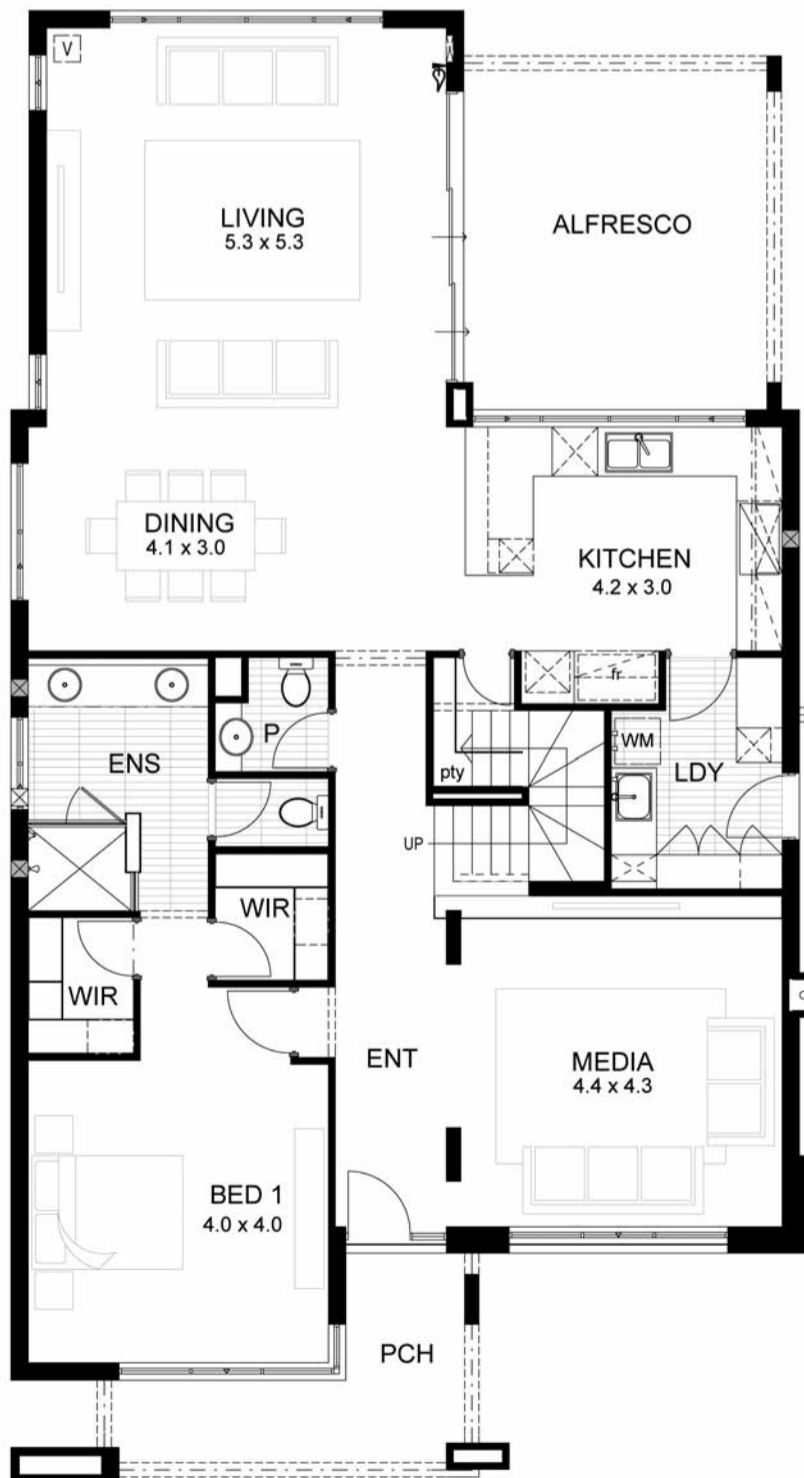


# rochdale



Ground Floor.....	154.32m <sup>2</sup>
Upper Floor.....	123.01m <sup>2</sup>
Balcony.....	9.46m <sup>2</sup>
Portico.....	9.67m <sup>2</sup>
Alfresco.....	19.61m <sup>2</sup>
Garage.....	36.64m <sup>2</sup>
Total.....	352.71m <sup>2</sup>



Ground Floor  
Width: 16.43  
Length: 19.47



life | style | choice